



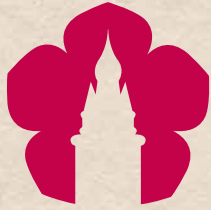
IN KRUMLOV



where to go
and what to do



SDRUŽENÍ
CESTOVNÍHO RUCHU
ČESKÝ KRUMLOV
TOURISM ASSOCIATION



SDRUŽENÍ
CESTOVNÍHO RUCHU
ČESKÝ KRUMLOV
TOURISM ASSOCIATION



Board of Directors of the Association



From left: Marek Šimon, Martin Lobík, Katharina Von Wallbrunn, Jiří Shrbený, Pavel Šimek, Pepa Maleček, Ota Šrámek



www.sdruzenicrck.eu




Dear visitors – welcome to Český Krumlov, to our town, to the place we've decided to bind our lives to. For us, it's just "Krumlov". Our families and friends live here, we call it home, and we simply love it. We do our best to make this a great place to live. Most of all, though, we want you, our guests, to feel comfortable, because we all have one thing in common – we want to create **the best possible services for you**, our guests and visitors. We are the ones – **the hoteliers, restaurateurs, innkeepers, retailers, carriers, guides, gallery owners, and many others** – who work to see you satisfied.

In 2010, we founded the **Český Krumlov Tourism Association** so that we could better cooperate and **work on collaborative projects**, and thus further improve our services for locals and visitors alike. This guidebook is part of this effort. We want to introduce ourselves more personally, to get better acquainted, and we also want to present you with the services that the members of our Krumlov "guild" offer. The following pages are filled with recommendations on where to eat great food and find comfortable accommodations as well as plenty of amazing things to see, do, and experience. Each of us in the Association is ready to contribute to your satisfaction. (See **pages 16-17** for a list of our members, and **pages 24-59** for more about each of us.)

We hope that our town leaves you with great memories.

The Český Krumlov Tourism Association

A panoramic view of a historic town built on a hillside. The town features a prominent church tower with a green roof and a spire on the left. The buildings are mostly multi-story structures with red-tiled roofs and light-colored facades. The town is surrounded by lush green trees and a river flows through the foreground. The sky is blue with scattered white clouds.

But first,
the genius loci...

The town's breathtaking atmosphere (what we call its "genius loci", or the spirit of the place) is the composition of all its monuments together with its history. It deserves a brief introduction.



1253, 1302, 1622, 1719, 1947, ...



The Gothic castle was first mentioned in writing in **1253** as the seat of the South Bohemian **Vitkovec family**. After they died out in 1302, the estate passed to the **Rožmberks**, one of the most powerful families of the Bohemian kingdom. During their nearly 300-year reign, they turned Krumlov into a strong economic and cultural center and built up the castle complex.

At the beginning of the turbulent 17th century, the town and castle briefly fell into the hands of the **Habsburgs** (Rudolf II) who soon gave it to the **Eggenbergs** (1622). Almost a hundred years later (1719), Krumlov was acquired by the **Schwarzenbergs**, who owned it until 1947.

The historical town center was declared a state-level municipal conservation area in 1963, then in 1992 Český Krumlov was inscribed on the **UNESCO World Heritage List**.

Latrán

the small town
below the castle



The castle steps and the tower of the former St. Jošt Church. Note the historical fresco with the bear peering out of the window.



- | | |
|---|---|
| 1 | 4 |
| 2 | 5 |

1/ Castle with tower 2/ Neptune's fountain 3/ Latrán 4/ Budějovice Gate
5/ Bellarie Summerhouse

The castle with Latrán, the community below the castle

The historical center of Český Krumlov consists of two main parts – the **Latrán** quarter (on the left bank of the Vltava) below the castle, and the **Inner Town** inside the right meander of the river. Latrán was protected from the north by the **Budějovice Gate**, today the only surviving town gate of nine former gates. It was built between 1598 and 1602.

The dominant feature of **Latrán** (and the entire old town) is the **castle and chateau**, the second largest castle complex in the Czech Republic (after Prague Castle, which is even the largest coherent castle complex in the world). It consists of the **Little Castle with its round tower** with covered gallery, and about 40 other buildings. Below the castle, the tower “competes” with the square tower of the former **St. Jošt Church**. The castle grounds include an 11-hectare **castle garden** consisting of Baroque and Rococo parterres divided by the cascading **Neptune Fountain** and the Revolving Auditorium a bit further uphill. The **Rococo Bellarie Summerhouse** also serves as a theater backdrop. The **Riding School**, a 1745 building in Viennese Rococo style, is in the northern corner of the garden. It was originally used for horse training in bad weather and now serves as Krumlov's main ballroom and a restaurant.



A parade passing through Latrán during the Five-Petalled Rose Festival.



- | | |
|---|---|
| 1 | 4 |
| 2 | 5 |

1/ Bears were introduced to the castle during the reign of Vilém of Rožmberk (1535-1592) 2/ Baroque Theater 3/ "Plášťák" Bridge and the Upper Castle 4/ Monastery ambit 5/ Český Krumlov Monastery courtyard

To the bears or to the monasteries

The 5th castle courtyard is home to the globally unique **Baroque Theater**, outstandingly preserved in its original form from the later 18th century, including the stage sets, costumes, and machinery. This courtyard is separated from the main "Upper Castle" by a gorge spanned by the **Na Pláští Bridge**, also known as Plášťák. There's another castle moat between the first and second courtyards which has been inhabited by **bears** since at least 1707.

The eastern side of Latrán holds the town's second largest complex, the dual monastery of Minorities and Poor Clares, founded by the Rožmberks in the mid-14th century. This complex has recently been generously revitalized and transformed into the "**Český Krumlov Monasteries**" cultural and educational center. The heart of these structurally connected monasteries is the original Gothic Church of Corpus Christi and the Virgin Mary, consecrated in 1358 and later modified in Baroque style. The **monastery gardens** (including the Tramín church courtyard) are some of the oldest in the town; just next to the monastery is the large (1.04 hectare) **Brewery Garden**, today used as a popular venue for prestigious cultural events.

Inner Town

nestled within the meanders of the Vltava River



Fountain with Marian Column on Svornost Square



1/ Lazebnický Bridge 2/ Radniční Street 3/ Svornost Square 4/ Parkán 5/ Detail of a facade on Panská Street

Inner Town and Svornost Square

Latrán is connected to the **Inner Town** by the **Lazebnický (Barber's Bridge)** and leads to **Radniční Street**. The Inner Town has been built in a planned manner since the 13th century. Parkán Street, on the left, leads between the former inner and outer walls of the Inner Town. Small houses built tightly into the narrow space between the former fortification walls are characteristic for this type of street.

Radniční Street ends at the **Svornost Square**, the main square of the town's historic center. The **Baroque fountain with Marian Column** from 1716 used to stand in the middle of the square. The **town hall** with its arcade and Renaissance attic takes up nearly the entire northern side of the square.





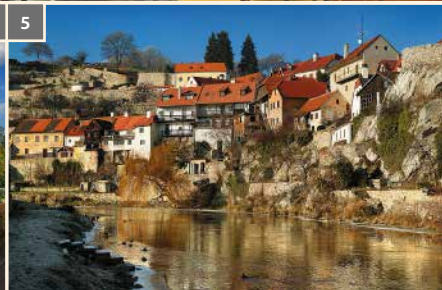
1/ St. Vitus Church 2/ Seminary Garden 3, 4/ Egon Schiele Art Center

To culture and history

Horní (Upper) Street rises from the square towards the **Jesuit College** (today the luxurious Hotel Růže), which was built in 1586-1590 as one of the first in Bohemia. The building is richly decorated with sgraffiti and fresco murals. The park opposite the Hotel Růže and next to the Regional Museum, the **Seminary Garden**, offers one of the most beautiful views of Český Krumlov. The **Regional Museum** features permanent and seasonal exhibitions as well as a spectacular **ceramic model of the town**, the largest of its kind in the world.

The **Egon Schiele Art Center** is a cultural institution of European importance. This is a gallery with 5,000 m² of exhibition space, much of which is devoted to the life and work of the Austrian expressionist painter and draftsman Egon Schiele (1890-1918), who lived and worked in Český Krumlov.

The tower of the **Church of St. Vitus**, a Gothic three-aisled church from the first half of the 14th century, rises above the roofs of the houses of the Inner Town. Its steeple is neo-Gothic and dates from the end of the 19th century.



1, 2, 3/ Seidel Fotoatelier Museum 4/ Synagogue 5/ Plešivce

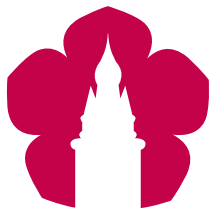
Egon Schiele (1890-1918) was active in Český Krumlov at the beginning of the 20th century. A garden house that commemorates the artist's stay in the town in 1911 is now used by artists in winter and is open to the public the rest of the year.

To the beginning of the 20th century

Cross the Beneš Bridge over to the left bank of the Vltava River to reach the **town park**. If you continue along Linecká (Linz) Street after the bridge, you'll reach the **Seidel Fotoatelier Museum**. This is another of Krumlov's rarities – a perfectly preserved photographic studio from the late 19th and the first half of the 20th century from the pioneering photographers **Josef Seidel** (1859-1935) and his son **František Seidel** (1908-1997).

A bit further stands the **synagogue** from 1909, a building with a turbulent history. Today it is a meeting place and a multifunctional cultural, artistic, social, and spiritual center.






SDRUŽENÍ ČESTOVNÍHO RUCHU ČESKÝ KRUMLOV

TOURISM ASSOCIATION

1

KOLEKTIV
CAFÉ • BISTRO • WINE BAR

Café KOLEKTIV
(p. 24) 

2



Graphite Mine
(p. 25)


3



Restaurant Jelenka
(p. 26) 

4



Rafting
and River Trips
(p. 27) 

5



Pension Tilia
(p. 28) 

6



Pension Kristian
Pension Orangerie
(29)

7



Golden Angel
(p. 30)

8



Villa Waldhaus
(p. 31)

9



Tennis Center
(p. 32)

10



Monastery Garden
(p. 33)

11



House of Czech Crafts
(p. 34)

12



Restaurant
and Hostel 99
(p. 35)

13



Auvix
(p. 38)

14



BEER & BURGER
Mústek
(p. 39)


15



Hotel Arcadie
(p. 40)

16



Czech Gingerbread
(p. 41) 

17



Český Krumlov
Guide Association
(p. 42)

18



Pension Gardena
(p. 43)

19



Beauties of
South Bohemia
(p. 44)


20



Papa's Living
Restaurant
(p. 45)

21



Authentic Café
(p. 46) 

22



Bistro Náplavka
(p. 47)

23



Castle Apartments
(p. 48)

24



Pension Kapr
(p. 49)

26



Gypsy Pub
(p. 52)

28



Hotel Dvořák
(p. 53)

29



Bellevue Hotel
Český Krumlov
(p. 54)

30



Old Bohemian
delicacies
(p. 55)

31



Český Krumlov
Brewery
(p. 56)

32



Hotel Castle Bridge
(p. 57)


33



Limoška
(p. 58)

35



Krumlov Mill
(p. 59) 



— BONUS symbol - more information on p. 80



accommodations

Pension Tilia **5** (28)
Golden Angel **7** (30)
Villa Waldhaus **8** (31)
Tennis Center **9** (32)
Monastery Garden **10** (33)
Hostel 99 **12** (35)
Latron 98 apartments **12** (35)
BEER & BURGER Můstek **37** (39)
Hotel Arcadie **15** (40)
Pension Gardena **18** (43)
Castle Apartments **23** (48)
Pension Kapr **24** (49)
Hotel Dvořák **28** (53)
Bellevue Hotel **29** (54)
Hotel Castle Bridge **32** (57)
Krumlov Mill **35** (59)

restaurants, cuisine

Café Kolektiv **1** (24)
Restaurant Jelenka **3** (26)
Golden Angel **7** (30)
Tennis Center **9** (32)
Restaurant 99 **12** (35)
Auvieux **13** (38)
BEER & BURGER Můstek **37** (39)
Hotel Arcadie **15** (40)
Papa's Living Restaurant **20** (45)
Authentic Café **21** (46)
Bistro Náplavka **22** (47)
Gipsy Pub **26** (52)
Hotel Dvořák **28** (53)
Bellevue Hotel **29** (54)
Český Krumlov Brewery **31** (56)

drinking spots, cafés, sitting and relaxation

Café Kolektiv **1** (24)
Restaurant Jelenka **3** (26)
Golden Angel **7** (30)
Tennis Centre **9** (32)
Restaurant 99 **12** (35)
BEER & BURGER Můstek **37** (39)
Papa's Living Restaurant **20** (45)
Authentic Café **21** (46)
Bistro Náplavka **22** (47)
Gipsy Pub **26** (52)
Hotel Dvořák **28** (53)
Bellevue Hotel **29** (54)
Český Krumlov Brewery **31** (56)
Limoška **33** (58)

delicacies, snacks, local specialties

Café Kolektiv **1** (24)
Czech Gingerbread **16** (41)
Authentic Café **21** (46)
Bistro Náplavka **22** (47)
Old Bohemian delicacies **30** (55)
Limoška **33** (58)

shops, gifts, souvenirs

Graphite Mine **2** (25)
Pension Tilia **5** (28)
House of Czech Crafts **11** (34)
Czech Gingerbread **16** (41)
Český Krumlov Brewery **31** (56)

experiences, entertainment, culture

Graphite Mine **2** (25)
Maleček Rafting and River Trips **4** (27)
Auvieux **13** (38)
Beauties of South Bohemia **19** (44)
Český Krumlov Brewery **31** (56)

sports & active recreation

Maleček Rafting and River Trips **4** (27)
Pension Tilia **5** (28)
Tennis Center **9** (32)

tours & day trips

Graphite Mine **2** (25)
Maleček Rafting and River Trips **4** (27)
Pension Tilia **5** (28)
Český Krumlov Guide Association **17** (42)
Beauties of South Bohemia **19** (44)
Český Krumlov Brewery **31** (56)

sports

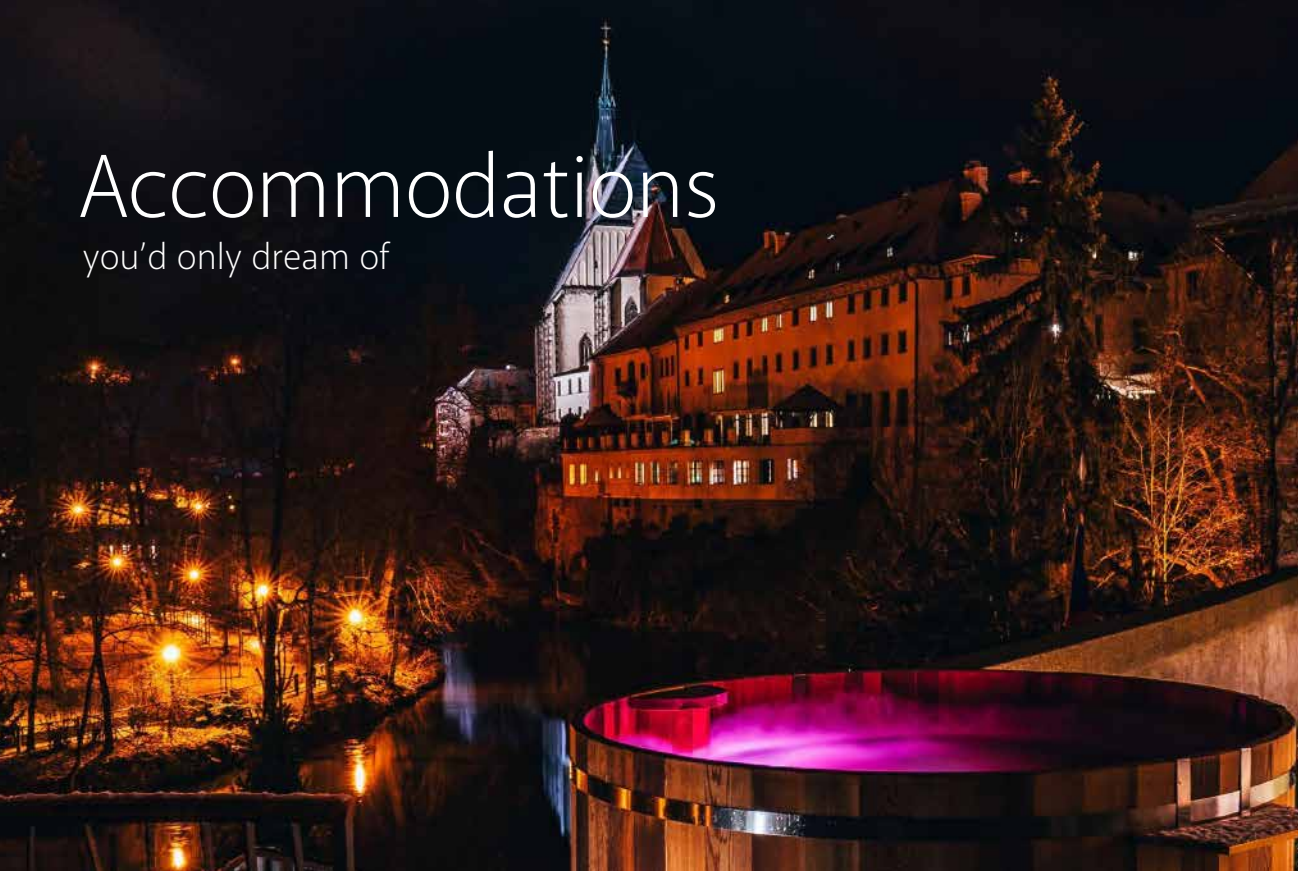
Tennis Center **9** (32)

foundations, projects, agencies, networking

Auvieux **13** (38)
Český Krumlov Guide Association **17** (42)

Accommodations

you'd only dream of



Our Association focuses on tourism, so it goes without saying that several of our members are experienced in providing **accommodation** and support service. Several overnights in our town should leave you with memories of extraordinary **experiences** enriched by the discovery of **authentic interiors**, unforgettable **views**, and local **hospitality**. Take advantage of our recommendations for accommodations in this guidebook (see page 19) and you won't go wrong.



Cuisine

ordinary & special occasions



Whether you're on a trip, at a concert, at a festival, or just walking around town, it's easy to get hungry or a craving for **something delicious**. This guide provides plenty of tips on where to go if you're looking for a **bite to eat**, a **local specialty**, or maybe you're looking for that special place? See page 19 for a comprehensive list. Enjoy!



1



Café KOLEKTIV

Latrán 13, Český Krumlov
+420 775 626 644
www.bistrokolektiv.cz

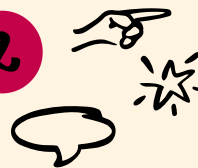


Café KOLEKTIV has been on the Krumlov scene since 2012. We pride ourselves on using quality and **seasonal fresh ingredients from local farmers and producers**. Every day we prepare **breakfast** using eggs from happy hens at outdoor farms. You can also sample our pates, spreads, quiches, gluten-free soups, and grilled sandwiches, all from our own kitchen. For refreshment we offer Czech and Austrian wines, prosecco, different gin & tonic variations, and our own homemade lemonades. We serve La bohème coffees from our espresso machine as well as French press or batch brew.

As the café owner and manager, I cordially invite you to enjoy our unique café with its view onto the street. I'm originally from Český Krumlov, and I always try to offer something both delicious and interesting. I've worked with cuisine for many years, and now it's my passion and my life mission. The experience and ideas I've gained while travelling abroad include work on an ocean liner in 2000, then a few years spent in Scandinavia, then a few months in New Zealand and the Middle East. My passion is travelling and exploring new areas and flavors of the world, and I always look forward to what my next inspiration will be.



2



Český Krumlov Graphite Mine

Chvalšinská 243, Český Krumlov
+420 380 711 199; grafitovydul@seznam.cz
www.grafitovydul.cz



"A mine is a hole in the ground – you can fill it in or flood it, but nobody can take it away from you." (A quote from a play by the Jára Cimrman Theater.) That's why I decided to fix up the **old abandoned bankrupt mine** and open it to the public. The mine combines both the region's history of **silver mining** in the 15th century and the later discovery of rich **graphite deposits** in the 19th century which were exhausted by the beginning of the 20th century. The extensive area inside the mine holds over **15 km of corridors** that feature plenty of period **machines and original equipment** and also provide insights into the **geology** of the Český Krumlov region. Riding the beautiful **mining train** is a magical experience for children, and seeing the machinery and maybe even spotting a mine goblin is something unforgettable for young and old alike.

If you're interested in seeing the world from the inside (so that you know what you're getting into :-)) and you're not afraid of **adventure**, don't miss this opportunity to discover the **beauty of the underground** just like the enthusiasts who keep this mine alive.

A miner's blessings to you all!
Viktor Weis





3



Restaurant Jelenka

T. G. Masaryka 138, Český Krumlov
+420 380 711 283

My restaurant career started at a secondary hotel school in Mariánské Lázně. My **lifelong experience** mainly included hotels in South Bohemia with a three-year interlude in Germany (all in the positions of head waiter and F&B manager) with experience in cocktail bars, catering, banquets, etc. My restaurant is based on an informal **family spirit**. The dress code of the wait staff is non-uniform, drawing inspiration from French villages. All the more emphasis is placed on the **quality of the cuisine**. Chefs with experience from Prague hotels and Gordon Ramsay's London restaurant chain, for example, are mostly responsible for the final product.

4



Maleček Rafting and Vory

Kaplická 27, Český Krumlov
+420 602 744 074; lode@malecek.cz
www.malecek.cz



Ahoj! My name is Pepa Maleček. I started the first boat rental service in Český Krumlov, and I **founded the modern wooden raft voyages**.

Our family has been running the boat rental since May **1992**. That's when I started at the "Mouse Hole" upper neck of the local Vltava meander and started offering raft rides around Krumlov. I started with a single boat which my brother, who was working in Italy, helped me buy. Today, I have a small fleet of **rafts and canoes** for up to **400 people** along the route from Vyšší Brod to Boršov.

In **2004**, our **first wooden raft** set sail on a sightseeing cruise through the historical center of Krumlov. This unusual perspective of the old town has been enjoyed by our favorite legendary singer **Karel Gott** during his birthday celebration as well as politicians, ambassadors, and a number of film and music stars.

Maleček Rafting – tradition, experience, and professionalism for 30 years and going strong.





5



Pension Tilia

Křížová 82, Český Krumlov
+420 777 282 215, +420 777 066 999
info@penziontilia.cz; www.penziontilia.cz



Pension Tilia is located at the very edge of the historic center of Český Krumlov at Křížová Street No. 82. It started as a small house in 1996, then it was completely reconstructed in 2006 and now provides accommodation in eleven rooms and one spacious apartment with a total capacity of 36 beds. Our guesthouse is open all year round and has its own lockable parking lot which is free for guests. We offer a delicious breakfast and seating in the garden in front of the guesthouse where your children can play in peace. In 2016, an **old traditional Czech pub** was built in the guesthouse which now offers our guests the option of enjoying Czech pub-style hospitality without even leaving the guesthouse. In 1998, we expanded our activities to Kájovská 63 in the center of Český Krumlov and now run a shop with traditional natural cosmetics from the Czech producer **Botanicus**. In 2010, we responded to our guests' requests and now offer **raft and electric scooter rental via Rafting Krumlov**. Today we are one of the larger rental companies on the Vltava River, and our headquarters is located at Pod Svatým Duchem 271.

6



Pension Kristian and Pension Orangerie

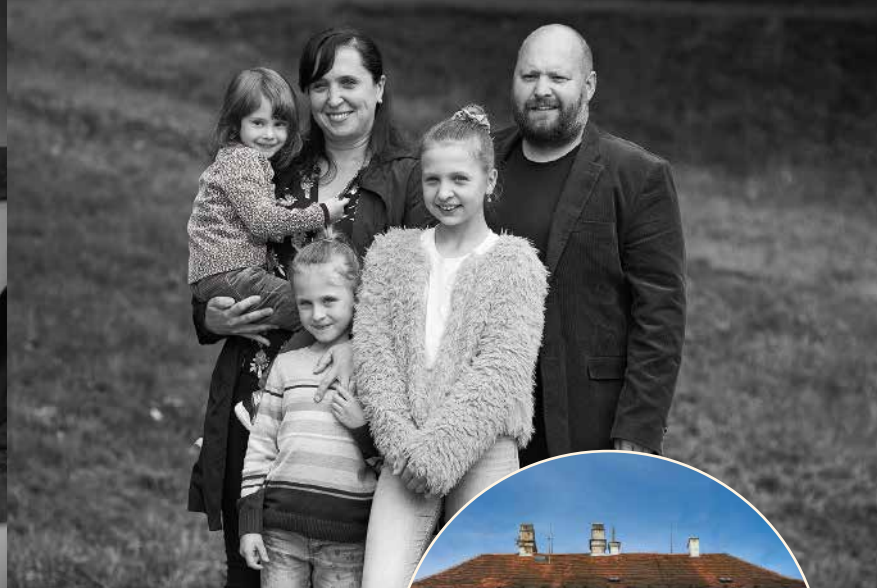
Masná 134, Český Krumlov
+420 777 103 983, +420 608 003 172
pk@pensionkristian.cz; pensionkristian.cz
www.orangeriekrumlov.cz



We run two guesthouses in the center of Český Krumlov with a personal approach. **Pension Kristian**, which started it all in 2019, is located on **Masná Street** with a capacity of 8 rooms which are divided into three categories. In 2022, we expanded with another pension, **Orangerie**, located in the **Latrán** part of the town. This property offers 3 apartments, 5 rooms and, for those who love privacy, a holiday house with its own entrance outside the main building. The guesthouse has a large garden which offers many uses. Children can jump on the trampoline, frolic in the tree house, and taste lots of fresh fruit from the trees and bushes on the way, while you can sit back and enjoy the view of the Krumlov towers with a glass of prosecco. We would love to welcome you and we hope you will fall in love with Krumlov as much as we did.

Kristian & Eva





7



Zlatý Anděl

Náměstí Svornosti 11, Český Krumlov
+420 380 712 310-315; info@hotelzlatyandel.cz
www.hotelzlatyandel.cz



An extra-touch hotel in the heart of Český Krumlov? This is the Golden Angel, or **Zlatý Anděl Hotel**. This is a family hotel with a friendly atmosphere offering accommodation and meals in three historic (originally gothic) buildings on the Český Krumlov **town square**. For more than 20 years, the owner Martin Mendlik, who gradually renovated it, has preferred an individual approach to each client, giving his guests many reasons to return. The staff tries to satisfy the wishes and requirements of each guest with a wide range of services. The hotel even welcomes pets. Accommodations are available in **46 rooms**, all decorated in different styles, and meals in one of **three restaurants**, including the extraordinary **Don Julius**. In addition to great cuisine and friendly service in the restaurants, the hotel also offers evening seating in the popular **Music & Cocktail Bar** and on the terraces during the warm months. The hotel staff is ready to meet your requests and wishes, be they special room arrangements (e.g. weddings, birthday surprises), cuisine specialties (banquets, family celebrations), trips to the surrounding area, exploring the town and its history, or sports activities.

8

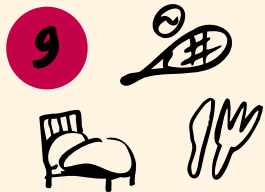


Villa Waldhaus

Vyšný, Nový dvůr 2, Český Krumlov
+420 777 637 374
www.villawaldhaus.com



For those who are looking for a place a bit further from the hustle and bustle of Český Krumlov, the former **Schwarzenberg gamekeeper's lodge** will fulfill all your secret wishes. This was where the Schwarzenberg prince would stay when he came from Hluboká to go hunting in the forests below Klet. A beautiful historical building nestled in a natural setting, yet still within easy reach of the center of old Krumlov. After a sensitive renovation, the facility now offers **three apartments** for peaceful living. Sunny **terraces, fireplaces, homemade eggs, bacon, and marmalades** for breakfast and much more... Come and enjoy Krumlov in a different way.



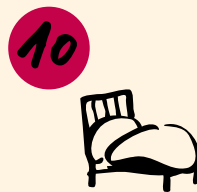
Tennis Center

Chvalšinská 247, Český Krumlov
+420 380 711 418, +420 602 133 355 (recepcie)
pension@tenis-centrum.cz; tenis@tenis-centrum.cz; www.tece-ck.cz



This tennis complex was built by the **tennis enthusiast Otakar Veselý** in 1999. Athletes of all ages, tennis fans, and others all love to spend free time here. This is a well-equipped facility for **tennis tournaments, tennis camps, corporate events**, and even **weddings**. Looking for a place to get active during your vacation? The tennis center features four outdoor **clay courts**, a **tennis hall** with three courts with a nice surface, a **beach volleyball court**, and a **multi-purpose court**. The complex also includes a guesthouse with seven fully equipped rooms. There is a private car park, an outdoor **swimming pool**, a playground, a summer **terrace**, and a **wine cellar**. The restaurant serves traditional dishes made from quality local ingredients. For a real treat, try the multi-course **tasting dinners**, accompanied by first-class selections of wines from Moravia, Rhineland, and Tuscany. You can also taste wines from the chateau cellar; for those interested, guided tours and tastings can be organized on request. This is simply the best place for individual, group, and corporate stays in Český Krumlov.

We look forward to welcoming you.
Otakar Veselý



Monastery Garden

Kláštevní 49, Č. Krumlov
+420 383 332 927, +420 771 161 444
info@monasterygarden.cz; www.monasterygarden.cz



We love Český Krumlov. We believe that the historic old town provides the perfect backdrop for **romance** and **dreaming**, and we believe that an overnight stay in Český Krumlov should be part of that experience. In the evening, after wandering through the town, enjoy a deep sleep in our downy blankets, then enjoy a hearty à-la-carte breakfast in the morning without rushing. Our house has been developing for at least 500 years, and over time, its owners have adapted the house to the needs of themselves and their craft. Just like our predecessors, we have sensitively added another layer to the house – this time contemporary – for the ultimate comfort of our guests in the 21st century. You will find **ten rooms**, each unique, imaginative, and respectful of the character of the house and its surviving features. You can lay your head in three categories of rooms – from the smallest to the largest suites for the discerning romantic, named after herbs or plants you would find in the neighboring monastery garden. You can stay, for example, in the **Rosemary**, the **Chamomile**, or the **Lily**... We won't reveal more; instead, be surprised in an age when everything can be "Googled"!

We look forward to seeing you at our Monastery Garden!



11



House of Czech Crafts

Radniční 23, Galerie Na Ostrově 88
Český Krumlov
+420 725 120 337; info@dumcr.cz
www.dumceskychremesel.cz



The **Galerie Na Ostrově** is a shop focused on the presentation and sale of Czech handicraft products. It's located in the historical building No. 88 Na Ostrově, which dates back to the first half of the 17th century as a former tannery. The shop's **personable interior** enhances the uniqueness of its range of handicrafts. The Galerie Na Ostrově celebrated its 20th anniversary in 2020 and is now one of the last shops in the Czech Republic to feature a wide range of **Czech handicrafts**. You'll find **wooden toys, ceramics, modrotisk blueprinting**, easter eggs, candles, gingerbread, metal candlesticks, glass, and much more. We also offer textile toys, puppets, and decorative items with our own original design. We trust that the time spent in our shop will fill you with lasting and pleasant memories. We look forward to seeing you.



12



Restaurant and Hostel 99

Věžní 99, Český Krumlov
+420 380 713 813, +420 704 734 846
hostel99@hostel99.cz; www.hostel99.cz



Hospoda 99 is a post-revolutionary project by the Pech doctor couple from Český Krumlov who in their free time transformed a medieval leper house on the edge of town into a restaurant that has been curing bad eating habits for years. The Pech family has never been one for copying others, and guided by their motto "every day you eat badly is a pity", they have been trying to be an inspiration through local interesting and accessible cuisine for years. This growing family has applied the same approach over the years to the concept of **accommodation** next to the restaurant. With surgical precision and sensitivity, they have transformed a long neglected house standing at the very "gateway" to the town center into accommodations with a unique atmosphere, where the past and the modern blend in balanced harmony, and where the town meets the world.



Krumlov carnival



Liberation commemorations



The end of winter in Krumlov means the traditional carnival, or “masopust”. For years, our Tourism Association has participated in the revival of this tradition with music, cheerful masks parading through the streets, and the end of the parade with a hog feast. Come and join us in the fun!

www.sdruzenicrck.eu/akce

Every year in May we come together with the town offices to organize a celebration of the liberation of Český Krumlov by the American army and commemorate the end of World War II. It includes a commemoration of the fallen, exhibitions, and reconstructions of the battle.

www.sdruzenicrck.eu/akce



Auvix

Latrán 37, Český Krumlov
 +420 214 445 404 (festival), +420 380 712 651 (pizzeria)
 komunikace@auviex.cz, pizzeria@auviex.cz
 www.festivalkrumlov.cz, www.pizzerielatran.cz



The tradition of the **Český Krumlov International Music Festival** dates back to **1992**, and this festival is one of the most important cultural events in the Czech Republic. This representative summer **showcase of the world music scene** brings a range of music from the 15th to the 21st century. The genre focuses on classical music, opera, musical, jazz, world music, and other genres, presenting important domestic and foreign artists in the enchanting environment of the Český Krumlov castle and in other buildings of this unique historic town.

In the 29 years of its existence, the festival has staged **526 concerts** and performances with more than 12,000 artists from 40 countries. The festival stages have hosted such **luminaries of world music** as Plácido Domingo, Jonas Kaufmann, Renée Fleming, Dmitri Hvorostovsky, Elīna Garanča, José Cura, Ramón Vargas, Shlomo Mintz, Broadway soloists, Juan Diego Flórez, Angela Gheorghiu, Piotr Bezczała, Sondra Radvanovsky, Mischa Maisky, Julian Rachlin, Javier Perianes, and others. Czech artists have included Karel Gott, Eva Urbanová, Dagmar Pecková, Václav Hudeček, Pavel Šporcl, Jiří Bárta, and many others.

Auviex also operates the **Latrán Pizzeria** and the **Castle Riding School**.



BEER & BURGER Mústek

Masná 136, Český Krumlov
 +420 602 267 111
 www.mustek.pub



Our Beer & Burger joint is located right in the heart of Český Krumlov, in the middle of **Masná Street**. We prepare each dish onsite with appropriate love and care. Our **burgers** come in a wide range of surprising combinations and flavors, and we only use mature **beef from local Šumava farms**. Each burger comes with a generous helping of homemade fries. Since quality beer is a natural part of the burger experience, we serve **Pilsner Urquell and Vlachovo Březi** on tap. Vegetarians are welcome of course, and we make several versions of our burgers without meat. Our establishment has been furnished to create a casual and friendly atmosphere, making it an ideal place to meet with family, friends, and workmates. We are a family-run restaurant that strives to offer the best possible service and provide nothing less than a positive all-around experience. We look forward to your visit and hope you enjoy your stay in Krumlov!



15



Hotel Arcadie

Horní 148, Český Krumlov
+420 380 727 585, +420 777 600 238 (manager)
info@hotelarcadie.cz; www.hotelarcadie.cz



When we bought this broken-down 16th-century house on Horní Street in 1996, our only goal was to return the house to its original splendor and to adapt it as sensitively as possible to future clients, both as hotel guests and restaurant visitors.

The former stables were converted into the **Gotika restaurant** – a restaurant with a sunny terrace and a view of the castle. The original elements of the stables can still be seen here. One of the burgher apartments has been sensitively converted into the **Cosa Vostra Pizzeria** – a place with the unmistakable aroma of delicate Italian cuisine. Then the most difficult task awaited us: to think about the concept of the **hotel** and to reconstruct and furnish the hotel rooms in the most tasteful yet timeless way so that guests of all generations would feel comfortable in them while still able to enjoy a bit of Český Krumlov's history. Our efforts to create an unforgettable experience culminated with newly built **luxury suites** with whirlpool, balcony, and a view onto the castle. Of course, the friendly staff is willing to help with whatever you need. Our satisfied and regularly returning guests have made it clear that we achieved our intended goal.

16



Czech Gingerbread

Latrán 54, Český Krumlov
www.ceskykrumlovoriginal.com



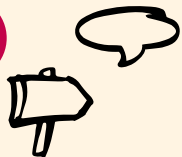
Imagine a fragrant shop full of all sorts of goodies to delight all the senses – this shop is right here in Český Krumlov. Its story began with an **old wooden carved mould** for gingerbread. Its discovery gave an impulse to the revival of the ancient and almost forgotten craft of gingerbread, which has deep roots in our town. **Hand-pressed gingerbread** naturally led to **painted gingerbreads, cakes, tarts, homemade jams, honey, mead**, and a whole host of other products that our region used to produce. Come and soak up the atmosphere, all sorts of smells, and delight your eyes – you're sure to be enchanted.

Gabriela Miglová and Martin Lobík invite you to Czech Gingerbread.





17



Český Krumlov Guide Association

náměstí Svornosti 2, Český Krumlov
info@guidekrumlov.com
www.guidekrumlov.com



We're a bunch of enthusiasts. We enjoy history, architecture, and art. We love to travel. We graduated from different schools and as a collective **speak 10 languages**. We love to wander the winding streets of Krumlov and tell **intriguing stories** about the people who left their indelible mark on the town. Our mission is to provide visitors with professional guide service. We want to leave our visitors with the feeling of a great and worthwhile tour. Try us for yourself! Let a local guide lead you through the streets of the historic center. You'll recognize us by our badge "**OFFICIAL TOURIST GUIDE**", which is awarded by the Town of Český Krumlov.

Stephan (Štěpán) is one of us. He was born in Krumlov and has lived most of his life in the town center, and he's been fascinated by history since he was a child. He started guiding as a high school student 20 years ago, and what started as a summer job became his lifelong passion and full-time employment.

18



Pension Gardena

Kaplická 21, Český Krumlov
+420 607 873 974; gardena@seznam.cz
www.pensiongardena.com



This house from 1875 still retains its **atmosphere of the old days**. It is surrounded by a **garden** full of mysterious corners, dominated by an **ancient linden tree**. Iva Reitingier and her husband Miroslav converted the house into an 11-room guesthouse in 2000 and since then have welcomed many guests from all over the world. Gradually, the guesthouse expanded to include 2 neighboring buildings for a total of 16 rooms and 7 apartments. It still retains the atmosphere of a family business with friendliness to every visitor. Everyone can easily find us, and the pension is easily accessible without worrying about traffic restrictions. It's also located in a **quiet part of town**, yet only **a few steps from the town square**. In addition to accommodations in stylishly furnished rooms, our guests can also enjoy breakfast or relax in the garden with beautiful views of the town. As a bonus, we offer our guests parking in the courtyard next to the house.



Beauties of South Bohemia

tomas@krasyjiznichcech.cz
www.krasyjiznichcech.cz



The Beauties of South Bohemia (Krásy Jižních Čech) is an **interactive project** that appears in all forms in the virtual world. Through my website and social networks, I recommend the best places for **unforgettable trips and fun activities** as well as unusual **cuisine experiences**. For four years now, I've been crisscrossing all of South Bohemia and gathering inspiration for my posts. During my journeys, I don't discriminate whether it's a castle, a chateau, a bridge, a lookout point, or simply an interesting town – I try to convey to my followers **everything I find beautiful**. If you don't know what you want to discover yet, just take a look at my website and explore all the places I've ever visited in one comprehensive form so that you can easily choose. Come to discover the beauty of South Bohemia with me – it'll be my pleasure.



Papa's Living Restaurant

Latrán 13, Český Krumlov
+420 702 215 965
papas@papas.cz; www.papas.cz



The complex of buildings adjacent to the former church of St. Jošt **used to be a hospital** and shelter for the poor and elderly employees of the Krumlov estates. After the first land reform in 1922, the hospital was closed down, then in 1936 it was converted into a residential house, later with an **inn**. It was in this building that **Papa's Living Restaurant** was opened in **1998** and is a firm part of the culinary scene in Krumlov. The restaurant has a beautiful **terrace** over the **Vltava** River with a **picturesque view** of the old town. The history of Český Krumlov is, among other things, a testimony to the meeting of people as well as different cultures, and our restaurant was conceived in accordance with this tradition. We strive to please you not only with **fresh cuisine** and an **extensive wine cellar**, but also with informal service and pleasant communication. We want your visit with us to feel like a visit with old friends, where you can forget your worries and have a good time.



21



Authentic Café

Náměstí Svornosti 9, Český Krumlov
+420 380 711 558; info@authenticcafe.cz
www.authenticcafe.cz



House No. 9 "At the Blue Horse" (U Modrého koně) is of Gothic origin, probably from the beginning of the 14th century. The house has a broad history of owners, but it's interesting to note that Vilém of Rožmberk transferred the house to the town in 1589 with the condition that the **innkeeping activity** must be preserved as it had been before. This is still the case today, as the house still serves as the Authentic Café, which has been owned by the same family for 25 years. The restaurant is particularly popular with the locals for its **pastry art**. The family is rightly proud of its cakes baked according to traditional Czech recipes, which are slowly disappearing from modern cafés. If you're lucky and it's a Friday, you can go for their **famous caramel pinwheel pastries**. Despite the rather café-like interior, it's also a restaurant. You'll naturally want to try the owner's specialty of **fruit dumplings made of cheesecake dough and marzipan**. We hope you'll be impressed by the restaurant's interior, decorated in First Republic **Art Deco** style. In the summer months, the restaurant also offers seating on the town square terrace with a view of the castle tower.

22



Bistro Náplavka

Náplavka, Český Krumlov
+420 775 956 992, jeduvodu@seznam.cz
www.facebook.com/bistronaplavka



The newly new outdoor **Bistro Náplavka** brought a fresh breeze into the world of gastronomy and entertainment in Český Krumlov. Located on the embankment of the Vltava River on a beautiful grassy terrace, flanked on one side by a wall of brewery gardens and the gurgling river on the other, a few minutes slow walk from the center of Krumlov. It provides a pleasant escape from the stone city to a place where you can order a delicious coffee while walking barefoot feet in the grass. We offer Krumlovers as well as tourists a pleasant **summer chill atmosphere**, complemented by a first-class assortment. We offer a wide range of delicious **hot dogs, homemade fries with home-made dips**, in both classic and vegan variations. Even meat lovers are not forgotten. The bar repertoire includes **selected coffee, homemade lemonades, exclusive cocktails, draught prosecco, natural wines and, of course, local beer**. The Náplavka even provides occasional musical culture. You can be sure that something is happening every weekend!





23



Castle Apartments

Zámek 57 (Latrán 45–47), Český Krumlov
+420 777 723 262; recepce@zameckaapartma.cz
www.zameckaapartma.cz



It's our pleasure to introduce you to our Castle Apartments guesthouse. What can we offer you? Most of all, you'll spend your stay in a magical location in the heart of the heritage zone **right next to the Český Krumlov castle**. The guesthouse is situated in three houses on Latrán Street. In the **House at the Three Ravens** (the former castle pharmacy) – we offer our largest apartments of up to 106 m². **The House at the Trumpeter's** and **House at the Chimney Sweep's** also offer interesting rooms, including a suite with an exceptional terrace that offers magnificent views of the castle and the town.

The rooms are tastefully furnished with natural wood furniture and are equipped with a fridge, satellite TV, hairdryer, and private bathroom, and some come with a kitchenette. A rich breakfast is included in the price and is served in the premises of the castle's former Salt House, which also holds the reception. All the houses are located in a **pedestrian zone**, so parking is available in the nearby Krumlov brewery complex. The location of the guesthouse offers everyone who wants to experience the genius loci of our historic town the unique opportunity to be part of it and live its story.



24



Penzion Kapr

Rybářská 28, Český Krumlov
penzionkapr@email.cz; www.penzionkapr.cz



Looking for a luxurious sleepover in fragrant duvets like your mum's? Want to relax in absolute peace and quiet, yet in close proximity to the tourist center? Want to enjoy breakfast on a terrace in the morning sun? Then you've come to the right place! We welcome you to our **quiet, family-run guesthouse on the banks of the Vltava River** in the center of Český Krumlov. The rooms offer a wonderful view of the most beautiful part of the Vltava meander and the historical center. The guesthouse is located in two adjacent, newly renovated, nearly 500-year-old houses in one of the oldest streets of our historic town. Pension guests can park their cars and motorcycles in a private parking lot near the guesthouse. We offer **rooms with private bathrooms** in all price categories, from economical twin rooms to superior quadruple rooms. A hot buffet **breakfast** is included in the price.

Český Krumlov Wine Festival

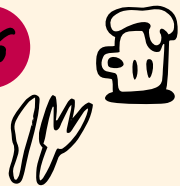


Good wine is a natural part of autumn. Every year, our association joins forces with the Český Krumlov Development Fund to organize the very popular **Český Krumlov Wine Festival**. During the festival, which lasts for **an entire month**, a wide range of events is prepared for gatherings with wine and for people who create and love it. The festival includes **tastings of domestic and foreign wines** as well as experiential **tastings** focused on top **cuisine**. On **St. Martin's Day**, the first young wines open on the square and the traditional roast goose is presented on the restaurant menus. For more information on the events, visit www.festivalvinack.cz





26



Cikánská jizba

Dlouhá 31, Český Krumlov
www.cikanskajizba.cz



In the early 1990s, we bought a house on Dlouhá Street and opened a small pub there. It's our livelihood and hobby. We focus on local specialties – we offer **beer from Krumlov** and traditional regional cuisine. In a proper gypsy pub, you can naturally smell the **gnocchi** being prepared in all the ways typical of Romani cuisine. And the best part of all? The captivating **Romani music!** Every weekend features wild musicians, and the sound of the violin is sure to captivate your heart. Come and enjoy the unique atmosphere in our pub, a few steps from the square right in the center of town.

We look forward to seeing you!
Milan and Věra Kotlár



28



Hotel Dvořák

Radniční 101, Český Krumlov
+420 380 711 020; reception@hoteldvorak.com
www.hoteldvorak.com



Our welcome guests will find **Hotel Dvořák** in a location where nearly every visitor to the town passes by. Just above the **Vltava River**, right next to the **Lazebnický Bridge**, and directly under the majestic silhouette of the castle complex, which you can see clearly from the room windows. We offer more than accommodations; we're also happy to invite you to sit in our **"River Terrace" garden restaurant**. You can also enjoy some quality relaxation with good food and great drinks in the **Lobby Bar** or in the **front garden** of the hotel, watching the performances of street artists or the lively bustle of the Lazebnický Bridge area.

In 2008, the hotel was taken over by its current operator, Mr. Richard Elterlein, who restored its reputation and expanded its range of services. Hotel Dvořák has once again become one of the town's most important accommodation facilities. Under his leadership, the team has given the hotel a new face, working comfort, seriousness, customer care, quality of service and, above all, a courteous, helpful, and friendly attitude towards customers – exactly in the spirit of the Czech saying **"Our customer is our master."**



Bellevue Hotel Český Krumlov

Latrán 77, Český Krumlov
+420 380 720 111; info@bellevuehotels.cz
www.bellevuehotelkrumlov.cz



Experience our **unique atmosphere**, complemented by **highly superior service**, all with the **family approach** of our team. For those looking for the best, we offer comfortable accommodations in the heart of Český Krumlov. Enjoy unforgettable moments in one of our suites, and **experience your own story at Hotel Bellevue**. Each accommodation package also includes a wide range of additional services in the hotel as well as the destination. Relax your body and mind in the ambience of our **sauna**. The Summer Garden Lounge offers a quiet intimate setting, ideal for spending time during the hot summer. Our cozy **Le Jardin Gourmet Restaurant** is available all year round, offering a refined culinary experience. The **Latrán Conference Lounge and Wine Cellar**, combined with the Le Jardin terrace, is the ideal venue for your corporate event or wedding. We are also pleased to welcome you to the boutique hotel **Villa Beatika**, located on the upper edge of the historic center and offering a peaceful atmosphere with unparalleled views of the town. Here you will find ten individually designed rooms inspired by the style of leading music stars. The unique garden of the Villa Beatika provides true relaxation. For those looking for a romantic atmosphere on the banks of the Vltava River, we provide accommodations directly below the castle in the **Pension Labyrint**.



Old Bohemian delicacies

Kájovská 62, Latrán 12,
Široká 80, Zámecké schody 5
+420 608 982 665
mls.ceskykrumlov@gmail.com



Our goal is to prepare simple, fresh, and locally prepared snacks for our guests that you will love to come back for. You can find us at four locations in Český Krumlov. **Our specialty** is the "trdelník", a popular delicacy originally from Romania. You won't be able to resist our delicious crêpes and galettes, or this year's novelty – the waffle. You can also enjoy our refreshing salads. In addition, we will gladly offer you quality coffee prepared by experienced baristas, fresh juices, our lemonades, and other drinks.

Our credo is high quality products, reasonable prices, friendly service, and an interesting environment where you'll look forward to returning to. There are so many reasons! Meetings with friends, business meetings, simple relaxation or simply enjoying your favorite cup of quality coffee.

We look forward to your visit!
The MLS Bistro Team

1/ Stall on Široká Street 2/ Crêperie at Latrán 12
3/ Crêperie on Kájovská St. 4/ Castle Steps

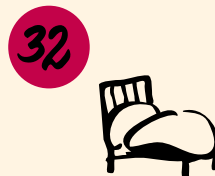


Český Krumlov Brewery

Pivovarská 27 – Latrán, Český Krumlov
+420 775 733 462, tours@pivovarck.cz
www.pivovarceskykrumlov.cz



We are Český Krumlov's only local brewery, and we are carrying on the very successful historical **tradition of the Schwarzenberg brewery**. All our beers are brewed with love and respect for tradition and for our customers. We want the Český Krumlov brewery to produce honest South Bohemian beer using quality brewing ingredients and processes, so a careful and professional approach to the complex care of our golden beverage is a personal matter for our team. Currently, the local microbrewery produces mostly bottom-fermented lagers, but we also offer top-fermented specials such as APA, IPA, and more. You can taste the beer practically all over Krumlov, and we also welcome you to **tours** which include beer tasting.



Castle Bridge Hotel

Hradební 174, Český Krumlov
+420 384 385 171, hotel@castlebridge.cz
www.castlebridge.cz



One exceptional historical structure makes up a characteristic part of the Český Krumlov Castle silhouette – the **Plášť Bridge**. It is a unique monument of its kind, spanning the castle moat for six centuries and radiating a special atmosphere. While it historically served as a bridge to the magnificent castle gardens for the Český Krumlov nobility and served as a gateway to the town center for the town's inhabitants, today it has become the source of inspiration for the name of the hotel itself.

The Castle Bridge Hotel is within sight of the Castle Bridge. It, too, bears a timeless double message – it provides its guests with all the **comforts right in the historical center** of the UNESCO town of Český Krumlov and yet offers the **poetic atmosphere** of an undiscovered corner on the banks of the Vltava River.



33



Limoška

Špičák 128, Český Krumlov
+420 777 994 279; limoska.sro@gmail.com
www.limoskaoriginal.cz



We are a small company from Český Krumlov focusing on the **production of natural syrups from fresh fruit and fresh herbs**. Our many years of experience behind the bar have given us a lot of experience in mixing flavors and balancing them, so now we've prepared absolutely exclusive flavors perfected without no essences or glutamates. It's never been easier to prepare a refreshing and healthy drink right in your home or at work.

So check out our selection, and add some **#limoška** to your table ;-)

35



Krumlov Mill

Široká 80, Český Krumlov
+420 736 634 469, +420 736 634 460
info@krumlovskymlyn.cz; www.krumlovskymlyn.cz



This is one of the oldest houses in the center of Český Krumlov. The **Krumlov Mill** used to be a feudal mill situated directly under the castle and chateau, and today it offers accommodations in **three luxury apartments**. When Marek Šimon, the Mill's co-owner, decided a few years ago to build apartments in a previously unused (and decrepit) part of the building, he knew that **exceptional spaces** demand exceptionality in everything. In design, furnishings, access, in the **overall atmosphere**. The concept of the apartments is intuitive, very personal, with intense attention to details, from the library to the big **bed hanging on chains** (no, it doesn't swing ;-)) to the **glass bathroom** and the well-equipped **wine cellar**... None of this is the work of an architect or interior designer, but of a person who has combined his talent and love with the place he (co-)owns, and whose goal is to make guests feel so comfortable that they won't want to leave the apartment.



Advent

and Christmas



Come discover the charm of Český Krumlov even in winter, especially at Christmas time. Every year we organize Christmas markets and participate in the organization of the program and accompanying events during the holidays. Our markets have several highlights – they are the longest (lasting 40 days), the most romantic, and the most fragrant! Taste our punch, mulled wine and candies, and buy the BEST gifts.
www.sdruzenicrck.eu/akce



circuit 6 km
3-5 h

Just outside the town

Castle Garden – Ptačí hrádek – Dubík

So you're staying for a few days, and you'd like to enjoy a hike somewhere? Ready to go get some fresh air with the kids, or perhaps you're missing the outdoors? Walk up to the **castle garden** and explore its surroundings. The garden was created for noble relaxation, and its architecture and composition are admirable. You'll find the **castle pond** (oddly enough, at the highest point of the garden), **two groves** (small woods), a **cascading fountain** with statues of water deities, the **Bellarie Summerhouse**, the **Summer Riding Hall**, the **Revolving Auditorium**, and **views** onto the town.

Behind the wall of the castle garden there extends the wooded hill named **Ptačí hrádek** which hides an interesting historical building – the **memorial of Karel Filip of Schwarzenberg**. Karel Filip (1771-1820), brother of Josef II of Schwarzenberg and 11th Duke of Krumlov, made history as one of the few men who defeated **Napoleon**. In **1813**, he commanded the victorious Allied troops in the **Battle of the Nations at Leipzig**, and a monument about 500 meters northwest of the garden commemorates this famous victory. Who would imagine that this successful military leader hated war and warfare?

TIP If you have children, we recommend continuing from the castle garden towards the southwest to **Dubový vrch Hill (Dubík)**, 681 meters above sea level) and walking along the **nature trail** with **thirty-five** playful elements. Your kids can try out the different sounds that different trees make, compare their jumping skills against a hare or a deer, draw a picture from an embossed laser plate, discover the local birds... In short, they'll learn a lot of interesting things about the local nature, and they'll also have fun on the forest playground. Especially in the summer, this walk offers a tempting opportunity to trade the hot town for the cool shade of the forest.

* The path through the forest to the memorial at "Ptačí hrádek" is not suitable for prams.



circuit 4 km
2 h

The most beautiful viewpoint

Cross Hill (Křížák)

To the south above the town, more precisely above the **Horní Brána** neighborhood, stands **Cross Hill**. The white chapel at the top, clearly visible from the various approaches to the town and from the distant surroundings, makes it an important landmark in the landscape. The **Baroque period** had a great predilection for such landscaping. Hikers should definitely make the trek to Cross Hill (or Křížová hora, locally known as **Křížák**), because the chapel offers perhaps the most beautiful view of the town.

The summit is 623 meters above sea level, and the **town square is less than 2 km away**. The final climb is admittedly a bit steeper, but that's a small price to pay for what awaits you at the top. Simply the fact that it's a pilgrimage chapel doesn't make it that extraordinary, but this place is literally charged with spiritual energy (no wonder miracles and answered prayers were expected here in the past), and when you add to that the **brehtaking view of the town below you** with the panorama of **Klet' on the horizon**, you'll congratulate yourself on the climb. Here's a few more simple facts: the chapel is Baroque from 1710, is octagonal in shape, and it has a Stations of the Cross leading to it, passing six niche chapels.

TIP Go to Křížák in good weather, when the visibility is promising. You can start from the square by our **recommended route**: past the **Church of St. Vitus**, then **along Horní Street** (you'll pass two viewpoints, from the seminary garden by the museum and from the chapel by the Theater), continue along **Rooseveltova Street** to **Křížová Street**, where the **Stations of the Cross** begin, and follow the chapels up the hill. Your destination will soon be in sight. The route is marked on the map on page 78.



Now that's a challenge!

Mount Klet'

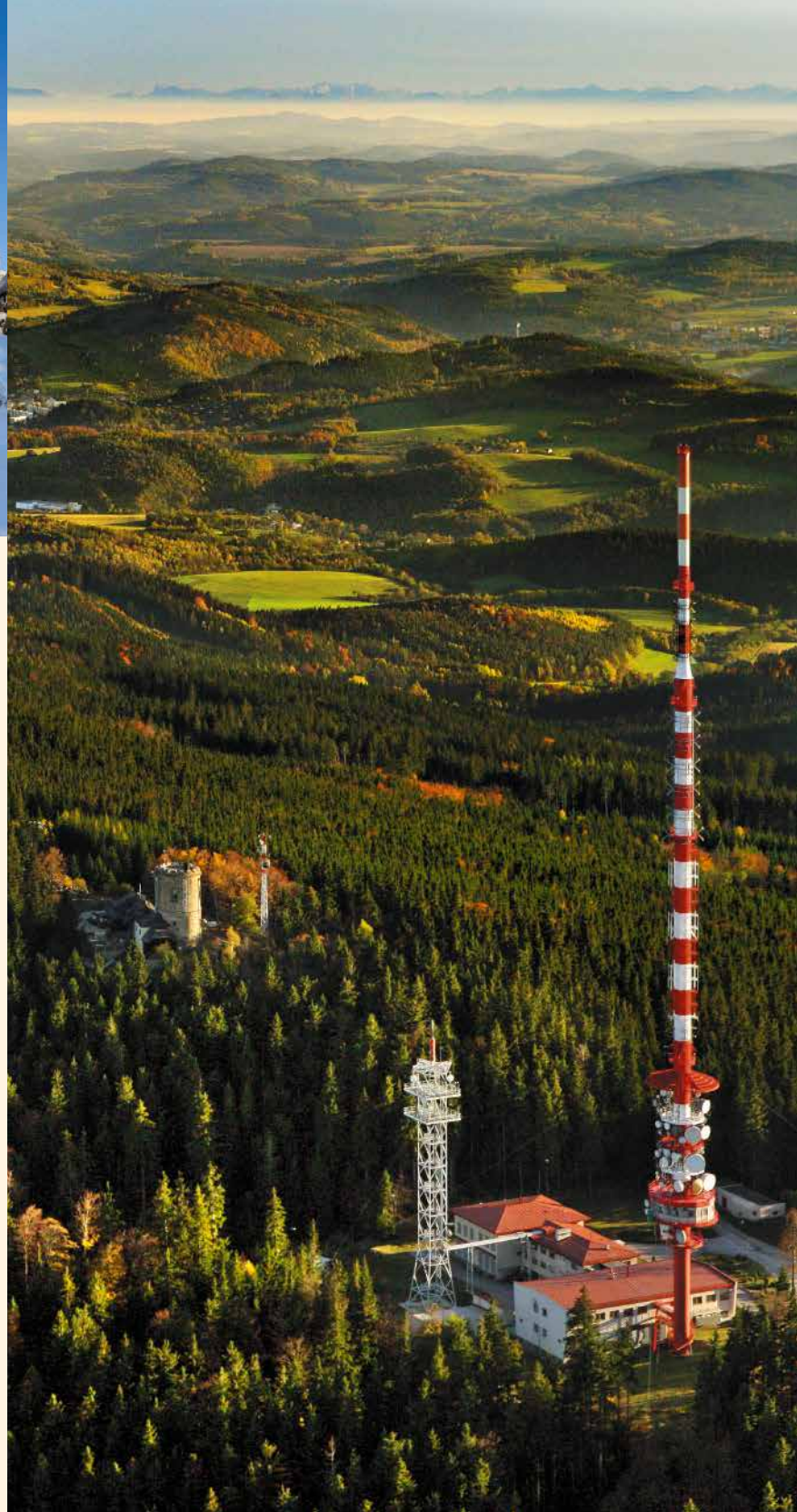


Do you like nature, forests, meadows, mountains, and hills? Then Mount Klet' is the right choice. We like to tell each other that if you haven't climbed Klet', then you haven't lived. Just like we call Lipno the South Bohemian Sea, the **1,084 m** high Klet' is our Mont Blanc. For us, it's "just around the corner", and there are many Krumlovians who climb it 365 times a year because they have simply fallen under its spell.

From the town center, it's a pleasant three-hour walk through the beautiful countryside, and from the last parking lot under Klet' it's only an hour and a half. There are several routes to choose from, but the tried-and-tested "classic" one goes past the **Modrý obrázek** (Blue Picture), so take the blue trail. From here, it's only an hour to the top, where at least two powerful experiences await you: the **breathtaking view** from Bohemia's **oldest stone lookout tower** (1825) with nearly all of South Bohemia in the palm of your hand, and in good weather, the **peaks of the Alps** on the horizon. The second is the **fabulous cuisine** of the chalet restaurant "in the clouds": great soups, ready-made dishes, bread with tasty "šmítec", sausages, and favorite local beers on tap. You just can't go wrong, because after the climb and in the fresh air, you get really hungry.

TIP The top of Klet' can also be climbed by its "northern wall", although it's more like a steep trail. In Krumlov, take a **local bus** towards České Budějovice and after twenty minutes you'll get off at the **Holubov** stop, from where it's less than two kilometers on foot to the base of the mountain. From there you can take a **chairlift** to the top and enjoy the panoramas below. You can also climb "on foot" along the trail leading directly under the chairlift. You won't change your mind once you get there, since you'll see the summit and the renowned restaurant from below.

* We recommend getting an early start up to Klet' so that you don't return in the dark..





1 – Chapel on Cross Hill (p. 63)

2 – Stations of the Cross (p. 63)

3 – Upper Gate Pond (page 74)

4 – Castle Garden (page 62)

5 – Ptáčí hrádek (p. 62)

6 – Vyšenské kopce Natural Reserve

7 – Blanský les Forest Protected landscape area

8 – Mount Klet (page 64)



7 km
1:30 h



Hidden Nature

Nature trail around the Olšina Pond

How about a **train trip to the countryside**? Figuratively speaking, you can get to places where humans have not yet set foot. Board the train in Krumlov and get off at the **Hodňov train station**, right by the levee of the **Olšina Pond**. The area that the **nature trail covers** was inaccessible until recently for two reasons: it was separated from the Boletice military area in 2016, and, more importantly, it is pure Šumava nature consisting of impenetrable **peat bogs and wetlands**. But thanks to the newly built paths in these “wet” passages, you can now comfortably walk through these places and see them up close in their authentic form. The footpaths are built of natural materials, no asphalt (only beams, planks, and piles), and the paths in the drier areas are filled with woodchips. Even so, this is no “holiday” walk, and especially in rainy weather, be prepared to brave the peat and mud of the Šumava region on your own. This can be inferred from the names of some parts of the trail, such as **Damp Fallow** and **Wet Forest (Vlhká lada, Mokrá les)**. This is why we recommend **appropriate equipment** (footwear) and checking the weather before you leave.

TIP The length of the trail is **7,322 m**, but the approximate time needed to complete it (1 hour 30 min.) should be taken with a grain of salt. It's really only an approximation, since with children the walk will definitely be longer. Not that this is a bad thing – there really is plenty of nature to enjoy here in the **wild Šumava countryside** not far from **Lake Lipno**.



3 km
1 h



Celts and Knights

Divčí kámen Castle and the Třísov oppidum

This is an easy history trip you can take **by train, car, or bus**. Your destination is the **train stop in Třísov**, 11 km from Český Krumlov. Why Třísov? You'll find peace, beautiful nature, and two extraordinary monuments separated by almost fifteen hundred years. The first one is an ancient **Celtic fortified settlement** (technically an **oppidum**) nearly hidden under the layers of the centuries, but with a little imagination and the help of **information boards** you can go back more than 2,000 years to the time when it was “alive”. Interestingly, only a minimum of weapons have been found in the Třísov settlement; the main activities of the former Celts were production and trade.

In contrast to the inconspicuous remains of the Třísov hillfort, **Divčí kámen** is something different altogether. It is exactly the kind of **castle ruin** a visitor would expect: monumental (one of the largest in Bohemia), partially destroyed, and of course romantically situated on a high rock above the river (exactly above the confluence of the Vltava River and Křemežský Brook). This is enough to make a powerful impression. The castle was founded by the Rožmberks in 1349, but after some 150 years it lost its importance and was abandoned.

TIP You can pass by the castle ruins along the Křemežský Brook and further along the Vltava. This will give you an idea of its extraordinary size, but more importantly, it will open up impressive views of the ruins and the massive adjacent rock cliffs. This is exactly how the Divčí kámen castle was once seen by the **rafters** who “parked” in the bend of the Vltava for the night. On the shore you can still find a tying ring embedded in the stone.



3 km / 1-2 h
3 weirs

Romantic ride

Sightseeing cruise through Český Krumlov



Have you got two hours to spare? A hot summer day with the burning sun? Are you younger, or older, perhaps a family with children? Then this is just right for you.

Try to float downstream along a section of the Vltava from Český Krumlov to Český Krumlov. Nope, that's not a typo. The Vltava River doesn't rush to get out of town, but it wanders through several **meanders** so skillfully that its passage from the beginning to the end of the town makes for a nice, almost full-fledged boat trip. You'll even float down **three weirs**, see the **historical part of the town from an unusual perspective** and, most importantly, you'll have a great time. You can even provide a bit of entertainment for the visitors and tourists, since (especially) the weir below the castle is a bit tricky and many a boater takes a surprise swim at the bottom. But you know what they say: sluices are the spice of boating. There's no need to hurry, since all you have to do is to reach your destination port at the Krumlov Brewery or Rozsyp u Trojice, where you can hand in your boat and enjoy the refreshment station at the end (the water trips tend to make your belly hungry and your throat dry).



15 km
4-6 h
4 weirs

An exciting day on the boat

Český Krumlov – Zlatá Koruna



Have you ever tried rafting or boating? Do you have time and want to enjoy a beautiful day? Take a cruise on the **Vltava River from Český Krumlov to Zlatá Koruna**.

Simply rent a boat or raft in Český Krumlov and you can enjoy a relaxing romantic and sightseeing cruise suitable **for all generations**. After passing through the historical center of Český Krumlov, where you'll pass down three (rather simple) sluices, you'll meander through the picturesque landscape towards Zlatá Koruna. On the way you can take a dip in the river, or you can stop at one of the several refreshment centers and have something good to eat and drink. All this can be done in half a day, but on a nice day there's no need to rush. The **rental company** that rented you the vessel will bring you back.

TIP Once you get to Zlatá Koruna, you don't have to return to Český Krumlov, since you are actually already "halfway" to other interesting places in the region – for a few kilometers more, you can reach the romantic ruins of the **Dívčí kámen** castle (see page 69) and you can choose Boršov nad Vltavou as your destination, but you'll need a whole day for this trip.

Lots more information here: www.navigacevltava.cz



Just like the old days

Sightseeing cruises on wooden rafts

Sail down the Vltava River on a **model of a historic wooden raft**, just like the generations before you. A wooden raft is the ideal choice if you want to enjoy the comfort and atmosphere of Český Krumlov without any effort. Avoid the crowded streets and let yourself be enchanted by the views of the town from this perspective.

The trip starts in a place called **Mouse Hole (Myší díra)** and in less than an hour you'll circumnavigate the entire **historical center** of Krumlov. You'll enjoy the view of the terraced houses, the town park, the churches of St. Vitus and St. Jošt, the castle, and two breweries. On the way you'll also pass down two of Krumlov's weirs. Our boatmen will tell you interesting facts about the voyage and the town along the way. The cruise ends in the center of the town at the Český Krumlov Brewery. Dry feet for the whole cruise!

TIP Did you know that we owe a little bit of this experience to **Charles IV**? In 1366, he issued a decree that ensured the **navigability of all weir** sluices for wooden rafts. Thanks to this, **wooden rafting** on our rivers was able to fully develop, a famous tradition was created, and today it's continued by the rafters that accompany you along the river. You'll be in good hands, just like in old times.

1,5 km / 1 h
2 weirs



From hill to hill

Cycling tours around the area

Did you bring your bike along, or are you thinking about renting one? You might appreciate some tips for cyclists. You can choose from routes of all levels of difficulty – a **comfortable ride** completely on flat ground, for example, will lead you **upstream** along the right bank of the **Vltava River to Větří**. On the other hand, you can collect **mountain bonuses** on the ascent **to the top of Kleť** (1,084 m above sea level).

A popular suburban circuit through the beautiful countryside is the route **along cycle path No. 1047** towards Kájov, before which you turn right and ascend to **Lazec**, then from there you return via **Vyšný**, this time downhill to Krumlov (the 12km circuit can be completed in an hour).

Is it too short a trip? You're right! From Kájov you can continue on to **Boletice**, or to Kladenské Rovné, then you can reach **Horní Planá** or **Černá v Pošumaví** (after climbing a certain elevation). In each of these towns on the banks of **Lake Lipno**, you can connect to the **bike path along the lake** and discover other amazing places in the region.

TIP There are countless possibilities and route combinations, and their description is far beyond the scope of this guide. The best way to do this, so they say, is to consult a map or to have a suitable route and destination recommended at the **information center** (on Svornost Square) or directly at your accommodation. They'll be happy to give you good advice!

Around
Lipno :-)



... Kleť,
Šumava,
whew!





Holašovice

Summer by the water

Swimming



Many of you planning a visit to Český Krumlov in the summer months will surely ask: "Is there anywhere to swim?" Because sights and UNESCO are fine and all, but... The answer will please you: "Yes!" Even right in the town.

As part of the renewed river swimming traditions, you can take a dip in **two river swimming spots** – one is a short walk from the Egon Schiele garden house while the other is on the border of the town park and the P3 parking lot (this used to be the town's main swimming area). At both places you'll enjoy a **comfortable entrance to the water**, pontoons on the surface, a place to spread a blanket in the grass, and a **refreshment area** in the town park. If you're a fan of "still" water, the **Horní brána pond** (with an area of over 1 hectare and situated almost under Cross Hill) awaits you. Children can play on the **playground** and **inflatable trampoline**. There's a beach volleyball court and a **fitness area** for the adults, and of course there are **refreshments**.

TIP The largest body of water in the Czech Republic, **Lake Lipno**, is only 20-30 minutes away by car, so it would be a pity not to enjoy a dip in a real mountain lake. The closest is **Černá v Pošumaví**, where it comes to life: **sandy beaches** near the Racek Hotel (suitable for families with children), the "Caribbean" beach at Windy Point, a sailboat harbor, campsites, and even the possibility of boarding a steamer.

Where to go by car?

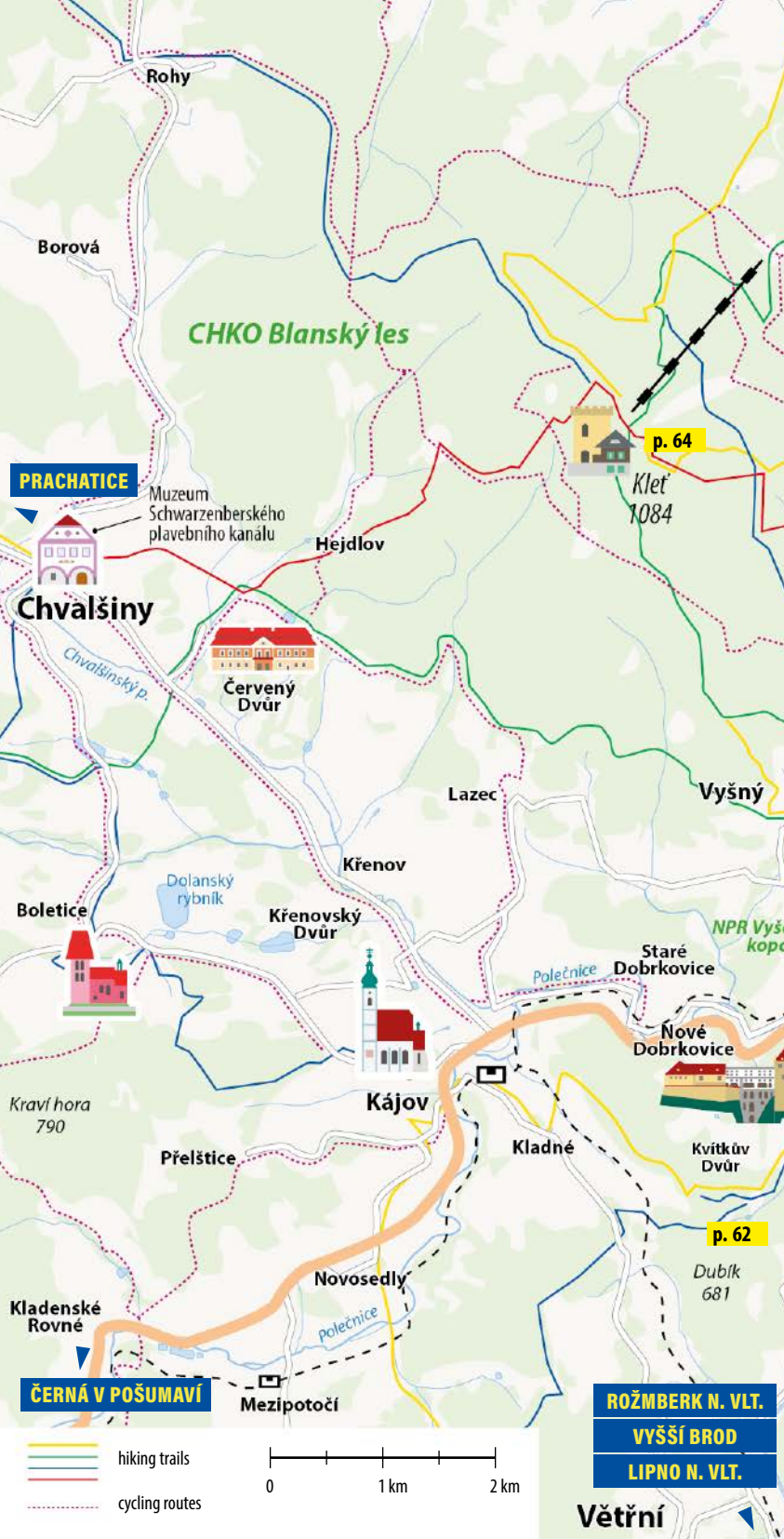
Day trips

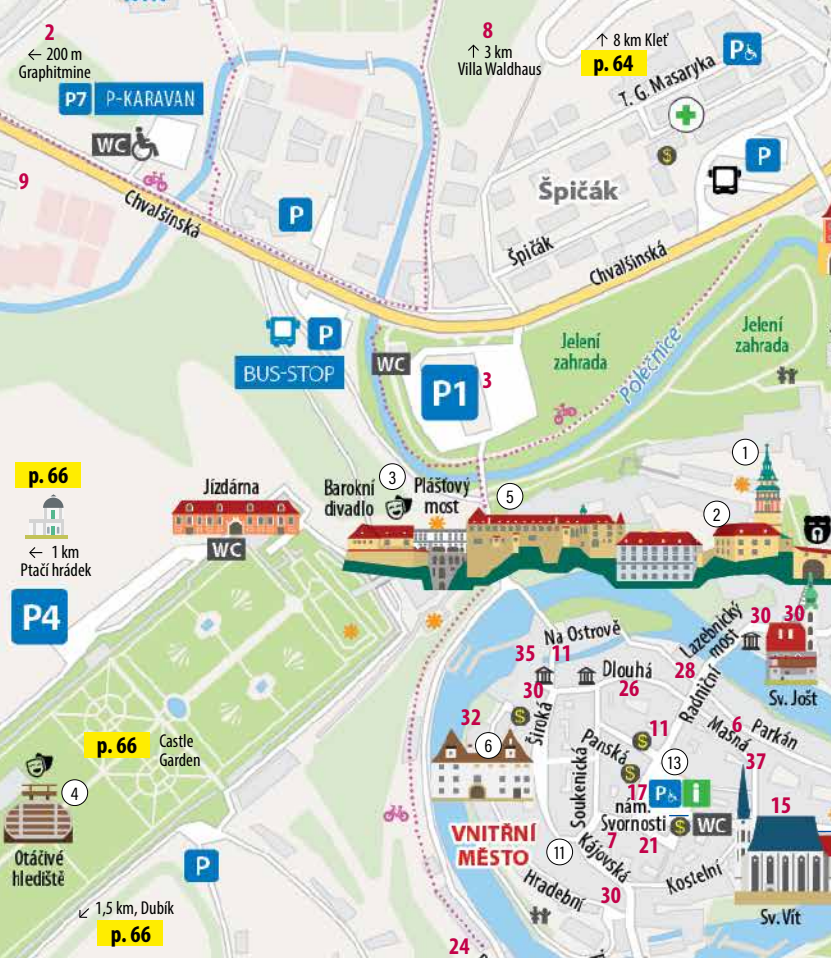


Hluboká nad Vltavou: **37 km**
 České Budějovice: **26 km**
 Holašovice: **26 km**
 Rožmberk nad Vltavou: **22 km**
 Vyšší Brod: **30 km**

So you've already explored Krumlov, and you're ready to see other interesting places in the area? How about a car trip for an afternoon or a whole day? One very attractive destination is **Hluboká nad Vltavou**, which is famous for its charming fairytale castle, built in English Neo-Gothic style. The largest zoo in South Bohemia, the **Hluboká Zoo**, is just a short distance away. The road to Hluboká leads through **České Budějovice**, the largest town in South Bohemia and the administrative center of the region. Its list of attractions is extensive, but just to name a few: Black Tower, the Masné krámy Restaurant, Samson Fountain, **Budvar** Visitor Center, and many more. To the west of České Budějovice lies **Holašovice**, a South Bohemian village with a large green and which is a **UNESCO** heritage site. South of Krumlov, upstream along the Vltava River (which would be impossible by canoe), you can reach **Rožmberk**, the former ancestral seat of the Rožmberks with its eponymous castle. A little further on, below the Lipno II dam, lies **Vyšší Brod**, the southernmost town in the Czech Republic. But more interesting here is the Cistercian monastery with the Rožmberk family tomb. The last member of this historical family, Petr Vok († 1611), was laid to rest here.

TIP Have you heard the legend of how the devil tried to build the first dam on the Vltava River? If you go from **Vyšší Brod** along the green trail (river on your left) towards Loučovice, you'll arrive to beneath Čertova stěna, or the **Devil's Wall** – an impressive "stone sea" which geologists say was formed by the disintegration of rock outcrops and the gravitational displacement of rock fragments. But the real story is that the devil himself was so angry about the establishment of the Vyšší Brod Monastery that he decided to block the flow of the Vltava River in order to flood the monastery and the church and wash it off the surface of the earth. A band of devils set to work at nightfall, busily carrying boulders. They didn't manage to finish the work before dawn, so they finally dropped everything and gave up.





- 1 – Castle tower
- 2 – Castle Museum
- 3 – Baroque Theater
- 4 – Rotating auditorium
- 5 – International Gallery of Ceramic Art
- 6 – Egon Schiele Art Center
- 7 – Synagogue
- 8 – Regional Museum
- 9 – Museum Fotoatelier Seidel
- 10 – Egon Schiele's house
- 11 – WAX Museum
- 12 – Torture Museum

Český Krumlov Tourism Association

- 1 – Café Kolektiv (24)
- 2 – Graphit Mine (25)
- 3 – Restaurant Jelenka (26)
- 4 – Maleček Boats and River Trips(27)
- 5 – Pension Tilia (28)
- 6 – Pension Kristian and Pension Orangerie (29)
- 7 – Golden Angel (30)
- 8 – Villa Waldhaus (31)
- 9 – Tennis Centre ČK (32)
- 10 – Monastery Garden (33)
- 11 – House of Czech Crafts (34)
- 12 – Hostel 99 (35)
- 13 – Auvieux (38)
- 15 – Hotel Arcadie (40)
- 16 – Bohemian Gingerbread (41)
- 17 – Guide Association (42)
- 18 – Pension Gardena (43)
- 19 – Beauties of South Bohemia (44)
- 20 – Papa's Living Restaurant (45)
- 21 – Authentic Café (46)
- 22 – Bistro Náplavka (47)
- 23 – Castle Apartments (48)
- 24 – Pension Kapr (49)
- 26 – Gipsy Pub (52)
- 28 – Hotel Dvořák (53)
- 29 – Bellevue Hotel (54)
- 30 – Old Bohemian delicacies (55)
- 31 – Český Krumlov Brewery (56)
- 32 – Hotel Castle Bridge (57)
- 33 – Limoška (58)
- 35 – Krumlov Mill (59)
- 37 – Beer & Burger Mústek (39)





BONUSES FOR YOU

CAFÉ KOLEKTIV (p. 24)

10% discount on in-café purchases

RESTAURANT JELENKA (p. 26)

5% discount for customers with this booklet

MALEČEK RAFTING (p. 27)

10% discount on rafting and canoeing trips
10% discount on a wooden raft voyage around Krumlov

PENSION TILIA (p. 28)

10% discount on a rafting trip with Rafting Krumlov

BOHEMIAN GINGERBREAD (p. 41)

5% discount on purchase

AUTHENTIC CAFÉ (p. 46)

5% discount on all consumption purchases

KRUMLOV MILL (p. 59)

50% discount on admission to the Motorcycle Museum

**Submit this printed guide (or its electronic version)
and take advantage of the bonuses we offer.**

We look forward to your visit!

Český Krumlov Tourism Association

náměstí Svornosti 2, 381 01 Český Krumlov

+420 774 192 974;

produkce@sdruzenicrck.cz; www.sdruzenicrck.eu

Graphic design, printing: Vydavatelství MCU s. r. o., www.mcumedia.cz

Technical editor: Radek Eliášek

Texts: Český Krumlov Tourism Association, Vydavatelství MCU

English translation: Bryce Belcher

Photo: archive of Vydavatelství MCU, Libor Sváček, archive of the Český Krumlov Tourism Association, Matěj Třešňák, Tomáš Perzl, archive of Maleček Rafting and Vory, Lubor Mrázek, Adobe Stock

Maps, illustrations: © Vydavatelství MCU, Pavel Dvořák

First issue, Český Krumlov, 2021 (2023)

Reproduction of any part of this publication is possible only with the prior written permission of the publisher. **Not for sale.**

ISBN: 978-80-7339-286-4



Look for this sign to recognize businesses operated by members of our Association. A list of members is on pages 16-17. Read more about each of us individually on pages 24-59.

**DOWNLOAD
THE FREE ONLINE GUIDE**



www.krumlovem.cz

